

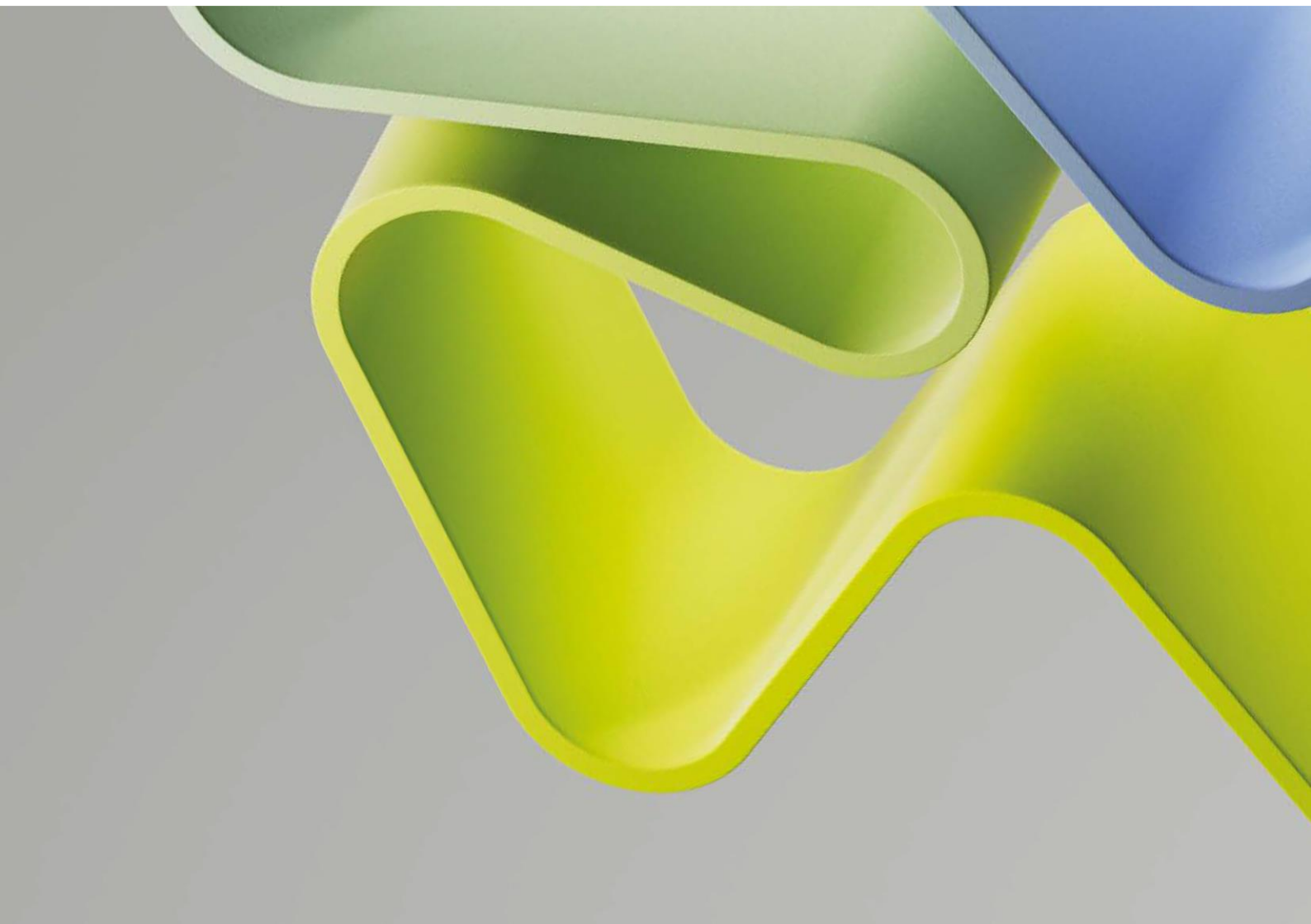
Evaluation of Medicine and Health 2023-2024

Evaluation report – Panel 4d

Research Group: Nursing and Health care

Administrative Unit: Stavanger University Hospital

Institution: Stavanger University Hospital



Content

Preface	4
Abstract	5
Overall assessment	5
Recommendations	6
1. Strategy, resources and organisation	7
1.1 Research group's organisation and strategy	7
1.2 Research group's resources	9
1.3 Relevance to the institution	10
2. Research quality	11
2.1 Research group's scientific quality	11
2.2 Research group's societal contribution	12
Appendices	13

Preface

The Research Council of Norway (RCN) is given the task by the Ministry of Education and Research to perform subject-specific evaluations. The primary aim of the evaluation of medicine and health (EVALMEDHELSE) 2023-2024 is to reveal and confirm the quality and relevance of research performed at Norwegian Higher Education institutions, research institutions (the institute sector) and the health trusts, in an international perspective. Such knowledge is useful for the institutions that participate in the evaluation, for the Research Council who advice the authorities on how research should be developed further, and for the authorities, who set targets and frameworks for research and higher education. Research groups submitted by their administrative unit will be assessed by 18 expert panels organised by research subjects or themes. The expert panels will assess research groups across institutions and sectors based on research group's self-assessments and examples of scholarly output. These research reports will be part of the evaluation of their belonging administrative units.

Abstract

Established in 2019, the Research Group for Nursing and Health Care Science (NURSING AND HEALTHCARE) evolved from a pre-existing forum for nursing and healthcare scientists dating back to 2012. The group comprises 30 members, who hold 20% to 100% positions at the university. Situated within the hospital's research department, the group is accountable to the research director. The group seems well-integrated into its organisational environment. This enables the group to carry out research "close" to practice. However, this does not seem to contribute to research excellence. There is room for improvement in the quality of the research and in published output.

The goals of group include generating "novel clinical insights" in three specific areas. However, the goals are predominantly clinical/practical, as the group wants to ensure "the provision of healthcare services of the highest quality and informing clinicians and decision-makers about best practices". The group's societal contribution is relatively limited. User involvement in research is barely considered within the self-assessment.

Overall assessment

Established in 2019, the Research Group for Nursing and Health Care Science (NURSING AND HEALTHCARE) evolved from a pre-existing forum for nursing and healthcare scientists dating back to 2012. The group comprises 30 members, who hold 20% to 100% positions at the university. The group aims to revitalise nursing and healthcare science within the hospital, offering a specialised network for engaging in discussions on various themes and methodologies. Beyond conventional medical boundaries, research topics include trust, communication, and hygiene. Situated within the hospital's research department, the group is accountable to the research director.

The application outlines several challenges encountered by the group. Some of these challenges are considerable and make it difficult to develop and conduct high-quality or cutting-edge research. However, the challenges do not seem impossible to overcome but to do so would require more dedicated leadership of the group to focus on efforts to attract external funding.

Challenges mentioned in the self-assessment include struggling to define a cohesive theme for external funding applications, which is somewhat surprising and suggests that the group is not as cohesive as might be needed for communication and discussion about potential projects. Limited availability of research positions within the hospital for PhD holders hinders clinical research progress, but this progress must also be driven by more senior researchers. There may be issues also with insufficient networking opportunities. Competing demands with clinical priorities are identified as another challenge. Such hindrances could be overcome if the group was more successful in attracting external funding, as such resources could be used to buy out clinical time for research purposes.

The self-assessment also identifies opportunities. It describes the group as serving as a vital network for nursing and healthcare researchers. The group's multidisciplinary nature enables diverse perspectives in addressing research questions, but this does not seem to have resulted in significant external research funding. Still, the group's proximity to healthcare is beneficial as it facilitates "practice-close" clinical research, it allows access to patient data, and it increases the likelihood of implementing and scaling up findings in healthcare practice. The group contributes to researcher education and enhances research proficiency within the hospital.

The organisational dimension is adequate as the group seems well-integrated into its organisational environment. This enables the group to carry out research “close” to practice although this does not seem to contribute to research excellence. The quality of the research and publication leaves room for improvement, and the group’s contribution appears somewhat limited. and user involvement in research is barely considered in the self-assessment.

Grading:

Dimensions		Score
Organisational dimension	How adequate the organisational environment is in supporting the production of excellent research	3
Quality dimension	Research and publication quality	2
	Research group's contribution	2
Societal impact dimension	Research group's societal contribution	2
	User involvement	2

Recommendations

The group would benefit from a stronger research focus. This would include the development of increased competence generally in developing credible funding applications, and the setting aside of research time particularly for the group’s most prolific and successful researchers so they can develop and lead funding applications for relevant projects that address key knowledge gaps.

1. Strategy, resources and organisation

1.1 Research group's organisation and strategy

The primary objectives of the group are to delve into key clinical areas, including understanding the subjective experiences of care and the impacts of disease and treatment, examining the evolution and leadership of healthcare services, and exploring the perspectives of patients, families, and healthcare professionals. The aim is to enhance healthcare quality and provide insights to clinicians and decision-makers to support best practice. Additionally, the group strives to advance nursing and healthcare science within the hospital.

Regarding benchmarks, specific criteria have been established: (1) Advancement of clinical research: the group convenes regularly to discuss ongoing projects, foster networking, and pursue funding opportunities to support clinical research; (2) Academic engagement: the group has doctoral students and postdoctoral scholars specialising in nursing and healthcare sciences, alongside 9 professors actively involved in teaching across various programmes, with the aim being to maintain a steady flow of doctoral students and increase the number of professors with part-time hospital positions; (3) Publication quality and quantity: The group is committed to maintaining a robust publication record in reputable scientific journals, aiming to publish 5-10 articles annually, aligning with the hospital's publication goals.

Many members of NURSING AND HEALTHCARE hold positions at the University and actively contribute to educational programmes at the University of Stavanger and VID University College. They teach across Bachelor of Science, Master of Science, and Doctor of Philosophy levels, as well as provide instruction on research methodology and clinically relevant subjects within the hospital. The group also offers supervision for Doctoral candidates and hosts a qualitative research forum four times per year, along with workshops on crafting review articles and developing research plans. Support from the host institution includes provision of essential equipment and workspace, statistical and practical guidance, software support, library services, access to research databases, and budgetary assistance in preparing funding applications.

The group has formulated relevant goals in terms of wanting to generate “novel clinical insights” in three specific areas. The goals remain relatively clinical/practical, as they want to ensure “the provision of healthcare services of the highest quality and informing clinicians and decision-makers about best practices”. However, the group also aims to “foster and enhance the field of nursing and healthcare science within the hospital”. This more scientific aim thus is not so ambitious as it does not go beyond the hospital, i.e. the self-assessment does not consider enriching the scientific field of nursing.

The research seems “practice-close”, which is relevant, but it would be helpful for reviewers to get information about what knowledge gaps the research is intended to address. Overly practice-oriented aims could be viewed as a weakness since research cannot always improve practice; it can yield better understanding and explanation of issues being studied, but it is not automatic that this will improve practice. For example, interventions might not prove effective and should thus not be scaled up. The benchmarking criteria seem generic and predictable, i.e. wanting to advance clinical research, pursue research and publish with quantity and quality.

Recommendations to the research group

The group would benefit from the development and adoption of aims that are research-oriented and identify knowledge gaps the research seeks to address. It might also be relevant to consider extending research beyond the three specific research topics that are outlined, in order to increase opportunities to attract external funding.

1.2 Research group's resources

NURSING AND HEALTHCARE consists of 30 (or 31 – different figures are given in the self-assessment) researchers: 9 professors, 13 associated professors and 9 PhD students. Nearly all researchers are female. The group receives core funding from the hospital, earmarked to sustain three 50% positions for doctoral students and four 20% positions for senior researchers, reflecting the hospital's dedication to advancing nursing and healthcare research. In both 2020 and 2021, members of the group secured NOK 75,000 in funding from The Regional Health Authorities.

Funding for high-quality research is an obvious area of attention for the group. The members of the group have received comparatively little competitive funding, with a consequent reliance on internal funds.

Recommendations to the research group

The research group should strengthen its work through external grant funding.

1.3 Relevance to the institution

NURSING AND HEALTHCARE is overseen by the hospital's research department. The group aligns its objectives with institutional research goals. Focused on building a robust research collective, enhancing clinical research, securing funding, and fostering international collaboration, the group cites funding and collaboration as key priorities. It integrates research across hospital departments, fostering interdisciplinary collaboration. Emphasising healthcare challenges and service needs, the group's diverse disciplinary affiliations contribute to its integrated approach.

The group has an important role within the administrative unit where it is active. It potentially contributes to a more research- and evidence-based practice since the research is so well-integrated in the institution.

Recommendations to the research group

No specific recommendations are made regarding the research group's relevance to the institution.

2. Research quality

2.1 Research group's scientific quality

NURSING AND HEALTHCARE comprises diverse expertise in theoretical and methodological approaches, which has the potential to foster interdisciplinary research. Projects explore patient and family experiences, addressing trust, uncertainty, coping mechanisms, and mental health. Patient safety and public health, including chronic illnesses, are also focal points. Findings contribute to clinical practice, professional development, and service delivery in nursing, physiotherapy, nutrition, and pharmacy. The group supervises doctoral students, with all completing their PhD within the expected timeframe, averaging one graduate per year. The group has published around 100 publications.

The self-assessment lists 9 projects, some of which lack funding and others with quite modest budgets. Stavanger University Hospital appears to lead on most projects. The self-assessment also lists 15 publications where group members have had important roles; the focus for publishing appears to be on nursing journals. Information about five monographs/scientific books is also provided. These consist of chapters in 3 books and 2 books in Norwegian.

The group's proximity to healthcare facilitates clinical research, allowing access to patient data and enabling research implementation and scale-up. The group contributes to researcher education and enhances research proficiency within the hospital. However, whether or the extent to which these activities contribute to excellent research could be questioned.

The self-assessment highlights competing demands with clinical priorities, which suggests that the group would benefit from increased external funding to "buy" clinical time for research. There is room for enhancement of the group's projects and publications.

Recommendations to the research group

One recommendation would be to prioritise topics that the group members could most effectively collaborate on, with a view to developing external funding applications (external funding would enable more and better research).

2.2 Research group's societal contribution

The self-assessment only briefly addresses the societal contribution of the group. Members of the research group contribute to educating patients about novel research findings relevant to the group. Group members also publish articles in newspapers and magazines presumably to inform lay people about research results and projects and to discuss societal consequences of their research and knowledge.

The self-assessment lists seven user-oriented activities. These mostly consist of Norwegian articles, and no details are provided on their focus or content. Two courses are also listed as user-oriented activities.

The societal contribution of the group is described only very briefly in the self-assessment and there is the potential to enhance activity in this space. User orientation might also be strengthened. User involvement does not feature prominently in the self-assessment, although it should be noted that members of the research group collaborate with user representatives from The National Association for Heart and Lung Diseases (LHL) and NORILCO, fostering partnerships aimed at advancing research and user initiatives related to heart and lung diseases, and colorectal cancer.

Recommendations to the research group

User involvement in research could also be strengthened through all stages of research (which should be relatively straightforward given the nature of the research and the proximity of the group to practice).

Appendices

(to be added by RCN / Panel Secretary)

- Mandate for expert panels
- Expert panel description and list of experts
- Template research group self-assessment
- Scales for research group's assessment

Evaluation of Life Sciences in Norway 2022-2024

Evaluation of Medicine and Health 2023-2024

Mandate Expert panels

The Research Council of Norway (RCN) is given the task by the Ministry of Education and Research to perform subject-specific evaluations. The Portfolio board for Life Sciences in the Research Council of Norway has decided to carry out an evaluation of medicine and health in 2023-2024 as the second of two evaluations within Life Sciences. The evaluation of biosciences takes place in 2022-2023.

1. The objective of the evaluation

The primary aim of the evaluation of Life Sciences is to reveal and confirm the quality and the relevance of research performed at Norwegian Higher Education Institutions (HEIs), by the institute sector and by health trusts.

The results of the evaluation will be used as recommendations to the institutions, the Research Council, and the ministries.

2. Tasks of the expert panels

The panels are requested to:

- evaluate the strategy, resources and organisation of/for the research groups.
- evaluate research production and quality of the research groups.
- grade and write a short evaluation text to the evaluated research groups.

Each of the expert panels will write a brief report with evaluations of the different research groups as well as specific recommendations.

3. Time schedule

Digital panel meetings will take place in the period March 15. - June 15. 2024.

Deadline for submitting panel report to the Research Council: June 15. 2024.

4. Miscellaneous

Other important aspects of Norwegian life sciences research that ought to be given consideration.

EVALMEDHELSE 2023-2024 – Panel group description – January 2024

Panel group	Description	Panel no.
Group 1 PHYSIOLOGY Physiology-related disciplines (human physiology), including corresponding translational research	Anatomy, physiology, embryology, nutritional physiology, pathology, basic odontological research, exercise physiology, neurobiology, toxicology, pharmacology, medicinal chemistry, chemistry, biology, pathology.	Panel 1a Panel 1b
Group 2 MOLECULAR BIOLOGY Molecular Biology, including corresponding translational research	Microbiology, bacteriology, inflammation and infection disease research, forensic medicine, genetics, immunology, vaccine development, microbiological diagnostics, pharmaceutical microbiology, cell biology, molecular medicine and -biophysics, medical biochemistry, omics, organoids, imaging, toxicology, pathology, drug development, cancer research, translational research, systems biology, personalized medicine, biomarkers, oncology, genetics, genomics, epigenetics, proteomics, bioinformatics-/statistics, computational science, AI, biology, virology, radiology, ionisation, molecular biology, microbiology, pharmacology, pharmacogenomics, regenerative medicine and related subjects.	Panel 2a Panel 2b Panel 2c
Group 3a CLINICAL RESEARCH	Clinical Research, including surgery and translational research within: paediatrics, women's health, gynaecology, otorhinolaryngology, head and neck surgery, oncology, haematology, radiology and medical imaging.	Panel 3a_1 Panel 3b_2
Group 3b CLINICAL RESEARCH	Clinical Research, including surgery and translational research within: general medicine, emergency medicine, anaesthesiology, neurology, geriatric medicine, rehabilitation medicine, cardiology, nephrology/urology, endocrinology, pulmonary medicine, orthopaedics, rheumatology, Infection, gastroenterology.	Panel 3b_1 Panel 3b_2 Panel 3b_3
Group 4 PUBLIC HEALTH Public Health and Health-related Research	Public health, community research, epidemiology, preventive medicine, mental health, behavioural research and ethics, medical statistics, environment, nutrition, preventive medicine, physiotherapy, sports medicine, implementation research, public health, health care services research, global health, nursing	Panel 4a Panel 4b Panel 4c

	sciences, rehabilitation sciences, public health systems, digital health care services, ICT, HTA, health competence, genetic and epigenetic epidemiology, non-communicable diseases, pharmacology, nursing research, professional research, occupational medicine.	Panel 4d Panel 4e Panel 4f
Group 5 PSYCHOLOGY Psychology and Psychiatry	Clinical psychology, personality psychology, developmental psychology, cognitive psychology, biological psychology and forensic psychology, psychiatry, including geriatric psychiatry, child and adolescent psychiatry and biological psychiatry, social-, community- and workplace psychology, organizational psychology, developmental psychology, behavioural and health psychology, health promotion and well-being.	Panel 5a Panel 5b

Panel group 4 PUBLIC HEALTH

Expert panel 4d

Name	Title	Institution
Nick Hardiker (chair)	Professor	University of Huddersfield
Nawi Ng	Professor	Gøteborg university
Marja Kaunonen	Professor	Tampere University
Avril Dummond	Professor	University of Nottingham
Per Nilsen	Professor	Linkøpig university



Evaluation of Medicine and Health (EVALMEDHELSE) 2023-2024

Self-assessment for research groups

Date of dispatch: **15. September 2023**
Deadline for submission: **31. January 2024**

Updated: **13. October 2023**

Institution (name and short name): _____

Administrative unit (name and short name): _____

Research group (name and short name): _____

Date: _____

Contact person: _____

Contact details (email): _____

Content

Introduction.....	3
Guidelines for completing the self-assessment	4
1. Organisation and strategy	5
1.1 Research group's organisation.....	5
1.2 Research group's strategy	5
1.3 Relevance to the institutions.....	6
1.4 Research group's resources	6
1.5 Research group's infrastructures	7
1.6 Research group's cooperations.....	8
2. Research quality	9
2.1 Research group's scientific quality	9
2.2 Research group's societal contribution.....	12
3. Challenges and opportunities.....	13

Introduction

The primary aim of the evaluation is to reveal and confirm the quality and the relevance of research performed at Norwegian Higher Education Institutions (HEIs), the institute sector and the health trusts. These institutions will henceforth be collectively referred to as research performing organisations (RPOs). The evaluation report(s) will provide a set of recommendations to the RPOs, the Research Council of Norway (RCN) and the responsible and concerned ministries. The results of the evaluation will also be disseminated for the benefit of potential students, users of research and society at large.

You have been invited to complete this self-assessment as a research group. The self-assessment contains questions regarding the group's research- and innovation related activities and developments over the years 2012-2022. All submitted data will be evaluated by expert panels.

Deadline for submitting the self- assessment to your administrative unit – 26 January 2024

The administrative unit will submit the research groups' completed self-assessments and the administrative unit's own completed self-assessment to the Research Council within 31 January 2024. Please submit completed self- assessment to the administrative unit no later than 26 January 2024.

Please use the following format when naming your document: [short name of the institution]_[short name of the administrative unit]_[short name of the research group], e.g. *UiT_DepPsy_Short name of the research group*.

For questions concerning the self-assessment or EVALMEDHELSE in general, please contact RCN at evalmedhelse@forskningsradet.no.

Thank you!

Guidelines for completing the self-assessment

- Please read the entire self-assessment document before answering.
- The evaluation language is English.
- Please link to websites/documents in the self-assessment where relevant.
- Please be sure that all documents linked to in the self- assessment are written in English and are accessible.
- The page format must be A4 with 2 cm margins, single spacing and Calibri and 11-point font.
- The self-assessment follows the same structure as the [evaluation protocol](#). In order to be evaluated on the two evaluation criteria described in the evaluation protocol, the research group must answer all questions.
 - ⇒ Provide information – provide documents and other relevant data or figures about the research group, for example strategy and other planning documents, as well as data on R&D expenditure, sources of income and results and outcomes of research
 - ⇒ Describe – explain and present using contextual information about the research group and inform the reader about the research group.
 - ⇒ Reflect – comment in a reflective and evaluative manner how the research group operates.
- Data on personnel should refer to data reported to DBH on 1 October 2022 for HEIs and to the yearly reporting for 2022 for the institute sector and the health authorities. Other data should refer to 31 December 2022 if not specified otherwise.
- It is possible to extend the textboxes when filling in the form. **NB!** A completed self- assessment form cannot exceed 25 pages (pdf file). Expert panels are not requested to read more than the maximum of 25 pages. Pages exceeding maximum limit of 25 pages **might not** be evaluated.
- Submit the self- assessment as a pdf (max 25 pages) to the administrative unit within **26 January 2024**. Before submission, please be sure that all text are readable after the conversion of the document to pdf. The self- assessment should be sent from the administrative unit to evalmedhelse@forskningsradet.no within **31 January 2024**.

Please note that information you write in the self assessment and the links to documents/websites in the self-assessment are the only available information for the expert panel.

In exceptional cases, documents/publications that are not openly available must be submitted as attachment(s) to the self- assessment (pdf file(s)).

1. Organisation and strategy

1.1 Research group's organisation

Describe the establishment and the development of the research group, including its leadership (e.g. centralised or distributed etc.), researcher roles (e.g. technical staff, PhD, post docs, junior positions, senior positions or other researcher positions), the group's role in researcher training, mobility and how research is organised (e.g. core funding organisation versus project based organisation etc.).

Table 1. List of number of personnel by categories

Instructions: Please provide number of your personnel by categories.

For institutions in the higher education sector, please use the categories used in DBH, <https://dbh.hkdir.no/datainnhold/kodeverk/stillingskoder>. Please add new lines or delete lines which are not in use.

	Position by category	No. of researcher per category	Share of women per category (%)	No. of researchers who are part of multiple (other) research groups at the admin unit	No. of temporary positions
No. of Personnel by position	Position A (Fill in)				
	Position B (Fill in)				
	Position C (Fill in)				
	Position D (Fill in)				

1.2 Research group's strategy

a) Describe the research group's main goals, objectives and strategies to obtain these (e.g. funding, plans for recruitment, internationalization etc.) within the period 2012-2022.

b) Please describe the benchmark of the research group. The benchmark for the research group should be written by the administrative unit in collaboration with the research group. The benchmark can be a reference to an academic level of performance (national or international) or to the group's contributions to other institutional or sectoral purposes.

Example: A benchmark for a research group is related to the research groups' aim which again is included in the strategy for the administrative unit. A guidance for the administrative unit to set a benchmark for the research group(s) can e.g. be: What do the administrative unit expect from the research group(s)?

c) Describe the research group's contribution to education (master's degree and/or PhD).

d) Describe the support the host institution provides to the research group (i.e., research infrastructure, access to databases, administrative support etc.).

1.3 Relevance to the institutions

Describe the role of the research group within the administrative unit. Consider the research group's contribution towards the institutional strategies and objectives, and relate the research group's benchmark to these.

1.4 Research group's resources

Describe the funding portfolio of the research group for the last five years (2018-2022).

Table 2. Describe the sources of R&D funding for the research group in the period 2018-2022.

	2018 (NOK)	2019 (NOK)	2020 (NOK)	2021 (NOK)	2022 (NOK)
Basic funding					
Funding from industry and other private sector sources					
Commissioned research for public sector					
Research Council of Norway					
Grant funding from other national sources					
International funding e.g. NIH, NSF, EU framework programmes					
Other					

1.5 Research group's infrastructures

Research infrastructures are facilities that provide resources and services for the research communities to conduct research and foster innovation in their fields. [These](#) include major equipment or sets of instruments, knowledge-related facilities such as collections, archives or scientific data infrastructures, computing systems communication networks. Include both internal and external infrastructures.

- Describe which national infrastructures the research group manages or co-manages.
- Describe the most important research infrastructures used by the research group.

1.6 Research group's cooperations

Table 3. Reflect on the current interactions of the research group with other disciplines, non-academic stakeholders and the potential importance of these for the research (e.g. informing research questions, access to competence, data and infrastructure, broadening the perspectives, short/long-term relations).

<p>Interdisciplinary (within and beyond the group)</p>	<p>About 1/3 page</p>
<p>Collaboration with other research sectors e.g. higher education, research institutes, health trusts and industry.</p>	<p>About 1/3 page</p>
<p><u>Transdisciplinary</u> (including non academic stakeholders)</p> <p><i>Transdisciplinary research involves the integration of knowledge from different science disciplines and (non-academic) stakeholder communities with the aim to help address complex societal challenges.</i></p>	<p>About 1/3 page</p>

2. Research quality

2.1 Research group's scientific quality

Describe the research profile of the research group and the activities that contribute to the research group's scientific quality. Consider how the research group's work contributes to the wider research within the research group's field nationally and internationally.

Please add a link to the research group's website:

Short version

Table 4. List of projects

Instructions: Please select 5-10 projects you consider to be representative/the best of the work in the period 1 January 2012 – 31 December 2022. The list may include projects lead by other institutions nationally or internationally. Please delete tables that are not used.

Project 1 -10: <i>Project title/Project period (year from – year to)</i>	Project owner(s) (project leaders organisation)	
	Total budget and share allocated to research group	
	Objectives and outcomes (planned or actual) and link to website	

Table 5. Research group's contribution to publications

Instructions: Please select 5-15 publications from the last 5 years (2018-2022) with emphasis on recent publications where group members have a significant role. **If the publication is not openly available, it should be submitted as a pdf file attached to the self-assessment.** We invite you to refer to the Contributor Roles Taxonomy in your description: <https://credit.niso.org/>.

Cf. Table 1. List of personell by categories: Research groups up to 15 group members: 5 publications. Research groups up to 30 group members: 10 publications. Research groups above 30 group members: 15 publications.

Please delete tables that are not used.

Publication 1 -15: <i>Project title/Journal/Year/DOI/URL</i>	Authors (Please highlight group members)	
	Short description	
	Research group's contribution	

Table 6. Please add a list with the research group's monographs/scientific books.

Please delete lines which are not used.

1	Title - Authors (Please highlight group members)- link to webpage (if possible)
2	

2.2 Research group's societal contribution

Describe the societal impact of the research group's research. Consider contribution to education, economic, societal and cultural development in Norway and internationally.

Table 7. The research group's societal contribution, including user-oriented publications, products (including patents, software or process innovations

Instructions: Please select 5–10 of your most important user-oriented publications or other products from the last 5–10 years with emphasis on recent publications/products. For each item, please use the following formatting. Please delete lines which are not used.

3. Challenges and opportunities

Information about the strengths and weaknesses of the research group is obtained through the questions above. In this chapter, please reflect on what might be the challenges and opportunities for developing and strengthening the research and the position of the research group.

Short version

Scales for research group assessment

Organisational dimension

Score	Organisational environment
5	An organisational environment that is outstanding for supporting the production of excellent research.
4	An organisational environment that is very strong for supporting the production of excellent research.
3	An organisational environment that is adequate for supporting the production of excellent research.
2	An organisational environment that is modest for supporting the production of excellent research.
1	An organisational environment that is not supportive for the production of excellent research.

Quality dimension

Score	Research and publication quality	Score	Research group's contribution Groups were invited to refer to the Contributor Roles Taxonomy in their description https://credit.niso.org/
5	Quality that is outstanding in terms of originality, significance and rigour.	5	The group has played an outstanding role in the research process from the formulation of overarching research goals and aims via research activities to the preparation of the publication.
4	Quality that is internationally excellent in terms of originality, significance and rigour but which falls short of the highest standards of excellence.	4	The group has played a very considerable role in the research process from the formulation of overarching research goals and aims via research activities to the preparation of the publication.
3	Quality that is recognised internationally in terms of originality, significance and rigour.	3	The group has a considerable role in the research process from the formulation of overarching research goals and aims via research activities to the preparation of the publication.
2	Quality that meets the published definition of research for the purposes of this assessment.	2	The group has modest contributions to the research process from the formulation of overarching research goals and aims via research activities to the preparation of the publication.
1	Quality that falls below the published definition of research for the purposes of this assessment.	1	The group or a group member is credited in the publication, but there is little or no evidence of contributions to the research process from the formulation of overarching research goals and aims via research activities to the preparation of the publication.

Societal impact dimension

Score	Research group's societal contribution, taking into consideration the resources available to the group	Score	User involvement
5	The group has contributed extensively to economic, societal and/or cultural development in Norway and/or internationally.	5	Societal partner involvement is outstanding – partners have had an important role in all parts of the research process, from problem formulation to the publication and/or process or product innovation.
4	The group's contribution to economic, societal and/or cultural development in Norway and/or internationally is very considerable given what is expected from groups in the same research field.	4	Societal partners have very considerable involvement in all parts of the research process, from problem formulation to the publication and/or process or product innovation.
3	The group's contribution to economic, societal and/or cultural development in Norway and/or internationally is on par with what is expected from groups in the same research field.	3	Societal partners have considerable involvement in the research process, from problem formulation to the publication and/or process or product innovation.
2	The group's contribution to economic, societal and/or cultural development in Norway and/or internationally is modest given what is expected from groups in the same research field.	2	Societal partners have a modest part in the research process, from problem formulation to the publication and/or process or product innovation.
1	There is little documentation of contributions from the group to economic, societal and/or cultural development in Norway and/or internationally.	1	There is little documentation of societal partners' participation in the research process, from problem formulation to the publication and/or process or product innovation.

Norges forskningsråd

Besøksadresse: Drammensveien 288
Postboks 564
1327 Lysaker

Telefon: 22 03 70 00

Telefaks: 22 03 70 01

post@forskningsradet.no

www.forskningsradet.no

Design: [design]

Foto/ill. omslagsside: [fotokreditt]

