

MRI

1. Your MRI examination is carried out by radiographers. A radiographer is a healthcare professional who takes images of the inside of your body and makes sure you are comfortable and well looked after during the examination. It is always fine to ask questions if there is anything you are unsure about.

MRI uses a strong magnetic field and radio waves to create images. It is painless and does not involve any radiation. You will lie still on an examination table that moves into a tunnel, which is open at both ends.

During the scan, the machine makes loud knocking and banging noises. To help you feel as comfortable as possible, we provide hearing protection such as headphones and earplugs. If you wish, you may also listen to music or watch a TV series or film during the examination.

You are welcome to close your eyes while lying on the examination table. Please let us know if you do not feel comfortable, or if the earplugs or headphones are not fitting properly. It is important to lie still while the images are being taken, and cushions are available on request should you require any extra comfort.

The examination usually lasts between 15 and 60 minutes, depending on which part of the body is being examined. **You will find more information about your specific MRI scan in your appointment letter -please remember to read all pages carefully.**



2. Turn right when you enter the Radiology Department. You will find the MRI department a short distance along the corridor.

You will also find toilets along this corridor.

The arrow in the picture shows the direction you came from, to help with orientation.



3. This is waiting area B214 for MRI. There may sometimes be a radio or TV playing. Please feel free to let us know if you would like the volume turned down.

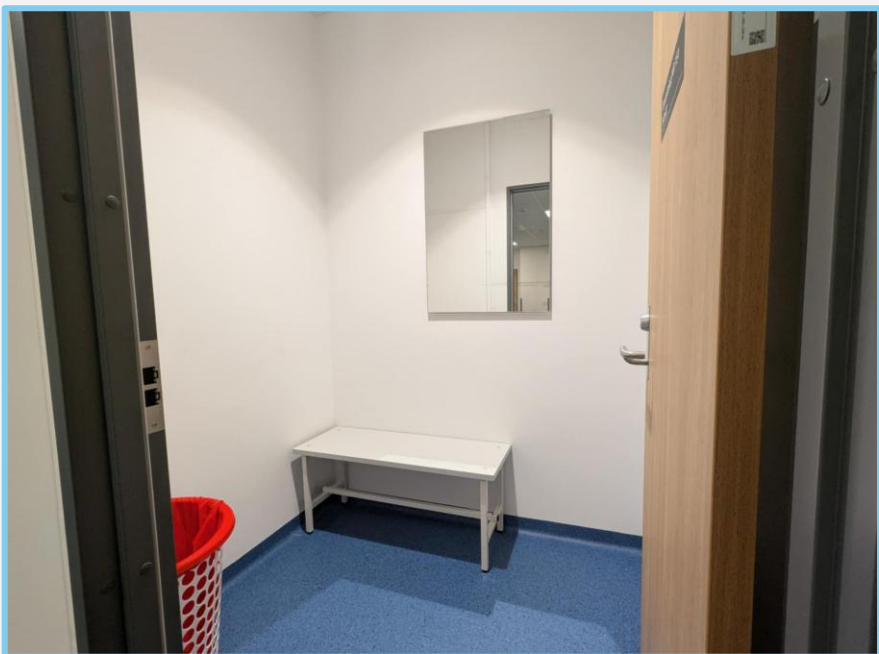
When you arrive, you can check in either on your smartphone or at the self-service check-in kiosk. Please keep an eye on the screen on the wall, which will show when it is your turn and which MRI room you should go to.

If you are unsure or have any questions, you are welcome to speak to the receptionist at the desk.

The reception is open Monday to Friday from 08:00 to 15:00.

There are toilets close to the waiting area, and a water dispenser is also available nearby.

The arrow in the picture shows the direction you came from, to help with orientation.



4. There is a private changing area here for your convenience, with bench and shoe-horn if required, and personal belongings can be stored within during your appointment.



5. The hospital clothing consists of a shirt made from soft, stretchy cotton with buttons at the front, and trousers with an elasticated waist. The hospital clothing is available in a wide range of sizes.



6. This is one of our MRI scanners.

During the examination, you will be given an alarm button to hold in your hand. You can press this button at any time if you need to get in touch with the radiographer during the scan. The radiographer will be monitoring you throughout the examination using a camera and a microphone, so you are never alone.

For some MRI examinations, you will be given a contrast agent. If this applies to you, a small cannula (a thin plastic tube) will be placed into a vein in your arm or on the back of your hand while you are lying on the examination table.

You may feel brief discomfort while having the injection to insert the cannula. The needle is then removed, leaving only a soft plastic tube in place, which is secured with medical tape.

7. To receive the signals from your body that form the MRI images, we use special devices called “coils” (sometimes referred to as antennas). These are placed over the area of the body being examined and may look slightly different depending on the scan.

The coils can vary in size and weight, and we take care to make sure they are positioned comfortably over the part of the body being imaged. You may sometimes feel a little warm while the images are being taken, but this is completely normal.



8. Here, the radiographer shows a head coil, which is shaped a bit like a helmet and is placed gently around the head during the scan.



9. Here is another example of a coil, used over areas such as the chest, abdomen, pelvis or legs. It is placed carefully to ensure comfort during the scan.