

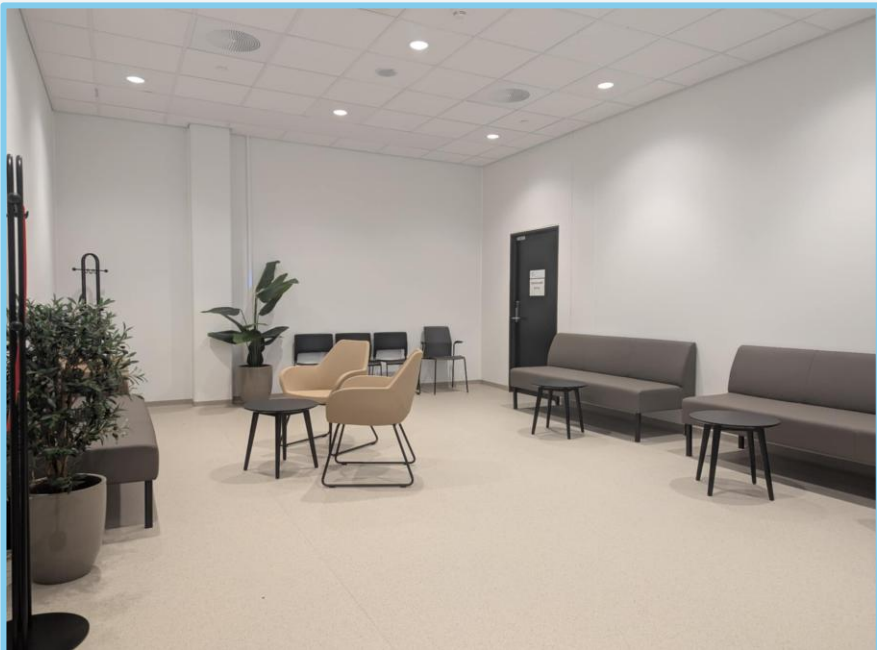
# CT

1. When you arrive at the CT department, you will be attended by radiographers. A radiographer is a healthcare professional who takes images of the inside of your body and makes sure you are comfortable and safe during the examination. Please feel free to ask questions at any time if there is anything you are unsure about.

The CT scanner consists of an examination table and a large ring, often compared to a doughnut. While the images are being taken, the examination table will move in and out of the scanner a few times. Depending on the type of examination you are having, the examination table may move at different speeds. You may close your eyes if you wish, and you can always let us know if anything feels uncomfortable.

The examination usually takes between 5 and 15 minutes. For some scans, you will be given a contrast agent. This is a special fluid that helps us see the inside of the body more clearly. **You will find more information about your specific examination in your appointment letter -please remember to read all pages carefully.**

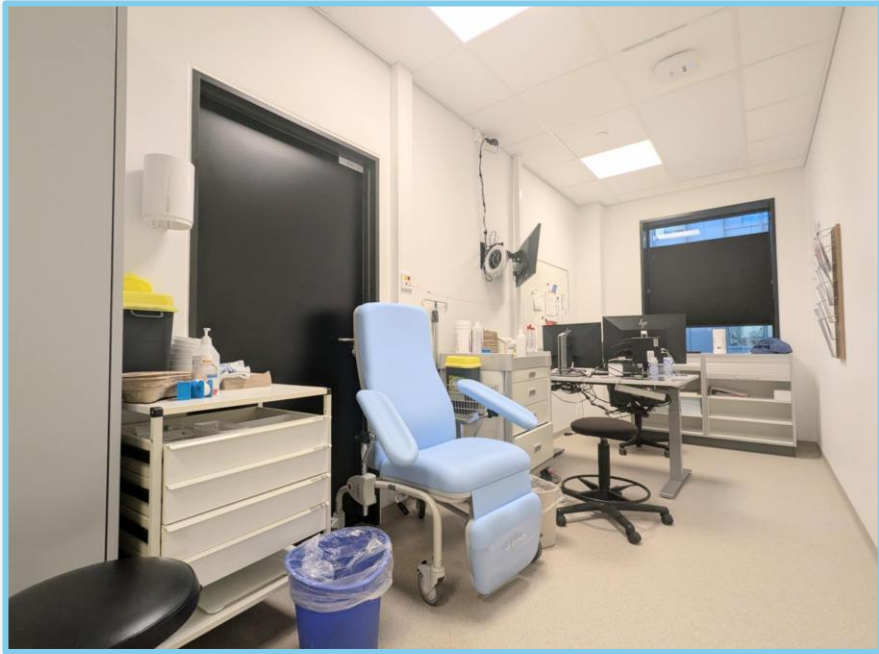
During the scan, you may hear a soft humming or whooshing sound from the CT machine. This is completely normal.



2. This is waiting area B205 for CT. While you are here, you may hear people talking, and occasionally you may hear alarm sounds. You may also see patients being wheeled past on beds. This is a normal part of the hospital environment.

You can follow the screen on the wall to see when it is your turn.

You will be notified on your smartphone which CT room you should go to, or a radiographer will come and collect you from the waiting area.



3. Some CT examinations are carried out using a contrast agent. If this applies to you, a radiographer will first take you to the CT preparation room. Here, you will be asked about your height and weight. If you are unsure, we have scales and a height measure available, so you do not need to worry about knowing this in advance.

The radiographer will explain what will happen and will place a small cannula (a thin plastic tube) into a vein in your arm or on the back of your hand. This is so that the contrast agent can be given when you go into the CT scanning room. In some cases, the cannula is inserted while you are already lying on the CT examination table.

Having the cannula inserted may feel like a brief injection. The needle is then removed, so only the soft plastic tube remains, which is held securely in place with medical tape.



4. The chair has an adjustable backrest, footrest and armrests so that you can sit comfortably, and the radiographer has all the necessary equipment within easy reach.

When the contrast agent is given in the CT scanning room, it is completely normal to feel a warm sensation spreading through your body. Some people also experience a feeling as if they might be passing urine, even though this does not actually happen. These sensations are common, harmless, and usually disappear after a few seconds.

If you have been given contrast agent, you will be asked to wait in the waiting area for 20 minutes after the examination before going home. This is to make sure that you are feeling well before you leave.



5. This is one of our CT scanning rooms. How you will lie during the examination depends on what part of the body is being examined. Sometimes you will lie with your arms raised above your head, and at other times with your arms resting by your sides. For some examinations, your legs will go into the scanner first, while for others your head will go in first.

Here, the radiographer shows what it looks like when you are lying on your back with your arms above your head, and your legs are moved into the scanner first.



6. Here, the radiographer shows what it will look like if you are lying on your back and your head goes into the scanner first.

The examination table can be raised and lowered to make it easier for you to get on and off before and after the examination.

Please be prepared to remove any clothing, jewellery or metal items from the area of the body being examined.

There is a basin for hand-wash, a chair and a shoehorn available in the CT room. You will find toilets in the corridor just outside the CT department.