

# Visual guide for Røntgen Egersund

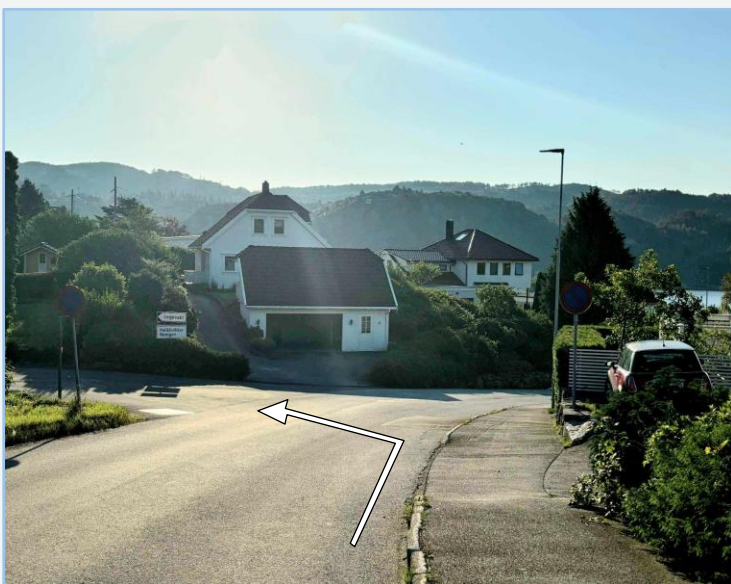
If you arrive from Egersund city  
centre/RV 44 Tengs



1. When you reach the intersection with the Egersund Hospital sign, continue straight ahead.



2. Drive straight ahead in the direction of the  
Emergency Room/Legevakten.



3. Turn left where you see the signs “Legevakten” and  
“Poliklinikker Røntgen”.

If you arrive from E39



4. When you come from E39 and have driven under the railway bridge, take a left at the intersection here, and then the first road to the right.



5. Drive up the hill and take a right at the intersection by the sign "Legevakten" and "Poliklinikker Røntgen".



6. Here you see the building where Røntgen Egersund is located, right in front of you. You will find the parking lot on your left side.



7. You can park here for free.



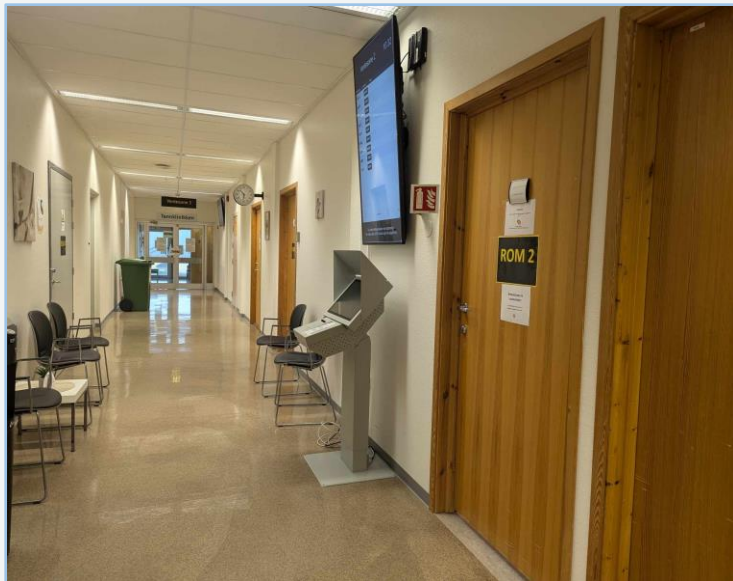
8. The entrance to Røntgen Egersund can be found on the long side of the building.



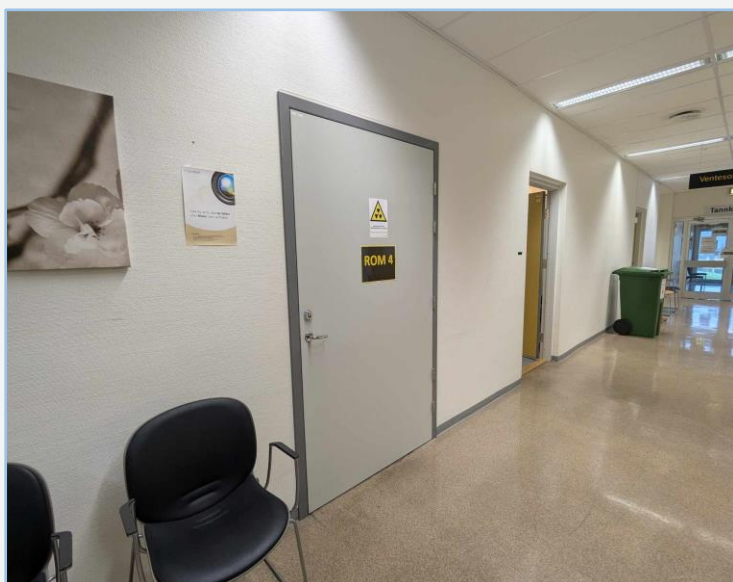
9. Here you can see the entrance Røntgen Egersund. The door opens when you press the large button on the left side of the door. There is a corresponding button on the inside that you can press when you want to exit.



10. Røntgen Egersund has a shared reception with the other outpatient clinics at Egersund Hospital. Here you can check in with the health secretary at the desk, or you can register yourself at the check-in kiosk located in the hallway to the right.



11. When you arrive for your appointment, you need to check in. You can do this either via the SMS you receive on your smartphone or at this check-in kiosk. After your appointment, you will receive an SMS with payment information. You can pay from home using Vipps, or you can automatically receive an invoice without an invoicing fee.



12. After you have registered, you can take a seat in one of the chairs outside Rom 4. The radiographer will call you when it is your turn.



13. This is our X-ray lab.

To ensure that the X-ray images are of the highest quality, you may need to remove jewelry, watches, and some clothing if they are in the area being imaged. To obtain clear images, it is important that the body part being examined is in the correct position.

The radiographer will take the time to explain and position you appropriately. The radiographer must wear a lead apron and lead collar if they need to be in the room with you during the imaging process. This is because the radiographer works with radiation every day throughout their career and must be extra careful to avoid unnecessary radiation exposure. The protection of the lead apron and collar ensures that the radiographer can perform their job safely.

When the X-ray image is taken, you may hear a humming noise and a beep from the X-ray machine.



14. The X-ray machine can be adjusted into different positions depending on what needs to be imaged.

Images can be taken while you are sitting. If you are going to take pictures of, for example, the wrist or elbow, the X-ray machine may be in this position.



15. Images can be taken while you are standing. This is how the X-ray machine can be set up if you are having images taken of, for example, your lungs or shoulder.



16. This shows how the X-ray machine may look if we need to take specialist X-rays of your spine or legs.